

WELD NECK CARBON STEEL FLANGE TYPE 11/B1 PN6 EN1092-1 PERFORMANCE RANGE

Weld neck electro carbon steel flange type 11/B1 PN6 according to EN 1092-1 for gas or fluids.
To connect valves with flanges PN6 (ball valves, gate valves, check valves, strainer...).

Certificate**3.1**

Size : DN15 to DN150
Connection : Flanges PN6 RF
Max Temperature : + 450°C
Max Pressure : 6 bars
Specifications : Raised Face (RF)
Weld neck BW type
Type 11/B1

Materials : Forged carbon steel P250GH



WELD NECK CARBON STEEL FLANGE TYPE 11/B1 PN6 EN1092-1 PERFORMANCE RANGE

SPECIFICATIONS :

- Raised face (RF)
- Welding neck BW flange type 11/B1
- Forged carbon steel P250GH

USE :

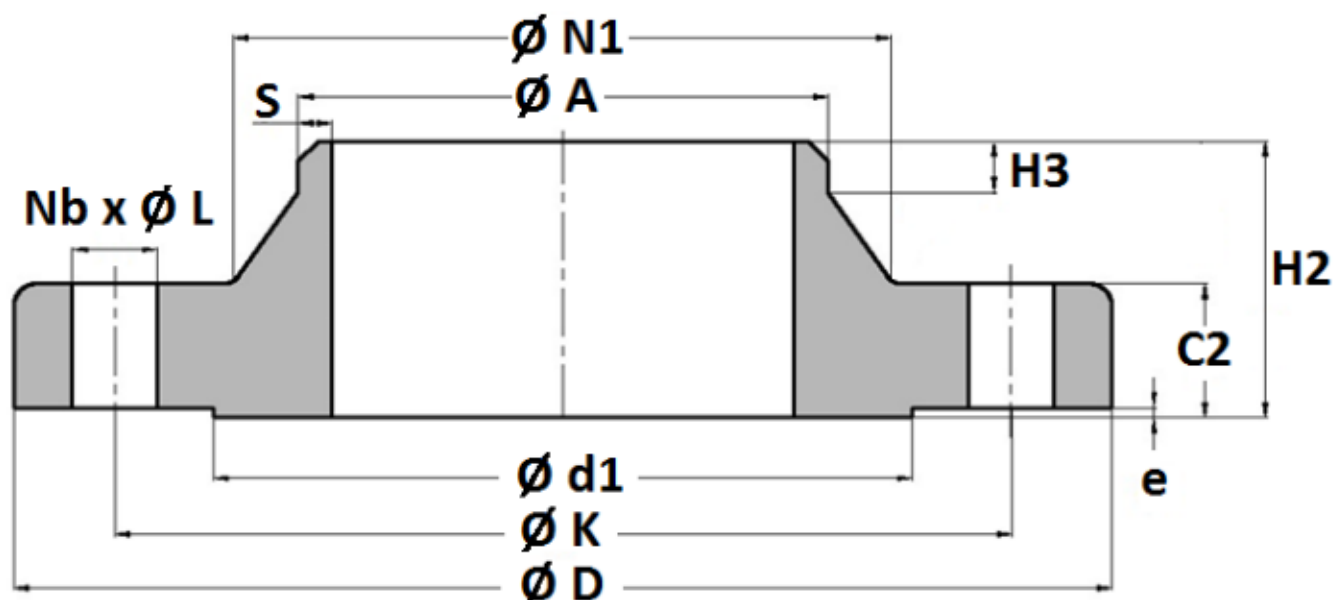
- For fluids or gas
- Max Temperature Ts : + 450°C
- Max pressure Ps : 6 bars

RANGE :

- Weld neck BW forged carbon steel flange PN6 type 11/B1 **Ref. 2124 IBC6** from DN15 to DN150

WELD NECK CARBON STEEL FLANGE TYPE 11/B1 PN6 EN1092-1 PERFORMANCE RANGE

SIZE (in mm) :



DN	15	20	25	32	40	50	65	80	100	125	150
$\varnothing D$	80	90	100	120	130	140	160	190	210	240	265
$\varnothing K$	55	65	75	90	100	110	130	150	170	200	225
Nb x $\varnothing L$	4 x 11	4 x 11	4 x 11	4 x 14	4 x 14	4 x 14	4 x 14	4 x 18	4 x 18	8 x 18	8 x 18
$\varnothing d1$	40	50	60	70	80	90	110	128	148	178	202
$\varnothing N1$	30	38	42	55	62	74	88	102	130	155	184
$\varnothing A$	21.3	26.9	33.7	42.4	48.3	60.3	76.1	88.9	114.3	139.7	168.3
H2	30	32	35	35	38	38	38	42	45	48	48
H3	6	6	6	6	7	8	9	10	10	10	12
C2	12	14	14	14	14	14	14	16	16	18	18
e	2	2	2	2	3	3	3	3	3	3	3
S	2	2.3	2.6	2.6	2.6	2.9	2.9	3.2	3.6	4	4.5
Weig. (Kg)	0.46	0.68	0.84	1.19	1.4	1.58	1.96	3.1	3.65	4.92	5.61
Ref.	2124015	2124020	2124025	2124032	2124040	2124050	2124065	2124080	2124100	2124125	2124150



WELD NECK CARBON STEEL FLANGE TYPE 11/B1 PN6 EN1092-1 PERFORMANCE RANGE

STANDARDS :

- Manufacturer certified ISO 9001 : 2015
- DIRECTIVE 2014/68/EU : Products excluded from directive (article 4, § 3)
- Certificate 3.1 on request
- Designing according to EN 1092-1 PN6

ADVICE : Our opinion and our advice are not guaranteed and SFERACO shall not be liable for the consequences of damages.
The customer must check the right choice of the products with the real service conditions.